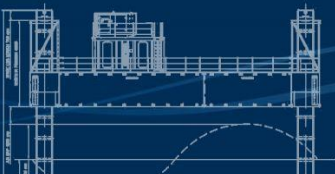


# ABH

Australian Barge Hire



## SEA LIFT 1

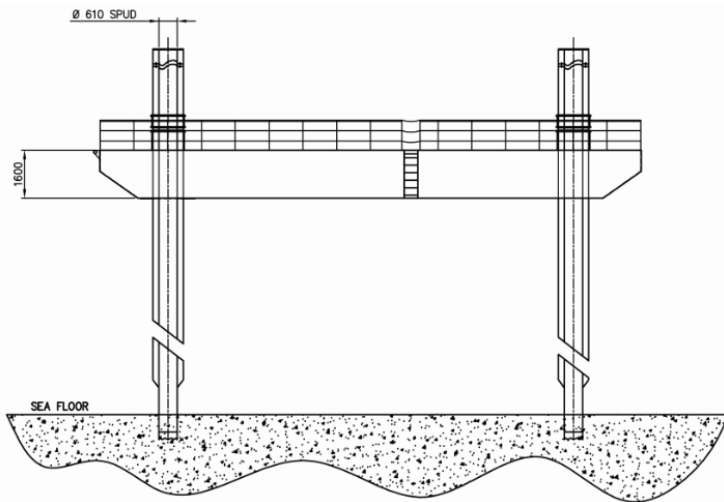
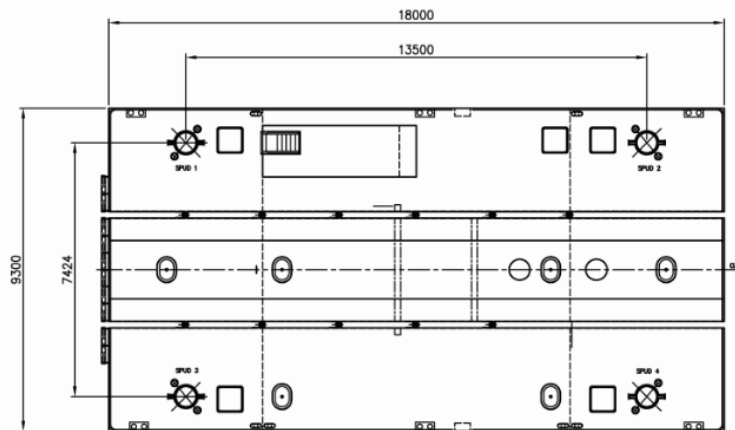


# JACK-UP



## BARGE SELF ELEVATING PLATFORM

# SEA LIFT 1



### Operation

“Sea Lift 1” employs electric over hydraulic controls for all barge operations. “Sea Lift 1” in standard configuration has four 12,18 or 30 m spuds, one in each corner. A central generator provides power to two electric hydraulic pumps which provide hydraulic pressure for barge operations. A mobile control panel, enables the operator to easily sight all operations.

Electronic interlocks and sensors provide the operator with status indications at the control panel and prevent inadvertent operation at the spud control. All of the hydraulic mechanisms and control systems to operate “Sea Lift 1” are located below deck to minimise the risk of both environmental and mechanical damage.

### General

Type	Jack Up Barge
Operator	Australian Barge Hire Pty Ltd
Survey	Australian Maritime Safety Authority
Classification	AMSA 2D and 2C
Built	Singapore
Construction	Steel
Road Transport	7 Extendable Semi Trailers
Working Depth	Up to 22 metres

### Main Dimensions

Length Overall	18.00 metres
Beam	9.30 metres
Depth	1.60 metres
Draft	0.80 metres
Displacement	100 tonnes (unladen)

### Jacking System

Jacking system	Electronic over hydraulic
Jacking Rate	13 metres per hour
Load Lift Capacity	80 tonnes
Spud Length	12, 18, 30 metres
Power Unit	100 kW

### Features

- 600mm Diameter Moon Pool
- 600 mm Diameter Rod Rack
- Onboard Site Office
- Remote control gangway access
- Remote controlled jacking operation
- Certified man riding crane
- Environmental spill containment equipment
- Night lights

## Australian Barge Hire

10 Pembury Road Minto NSW 2566

Phone: 02 9531 2900 Email: [info@australianbargehire.com](mailto:info@australianbargehire.com)

