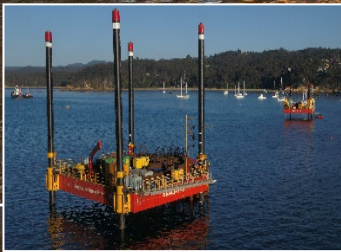
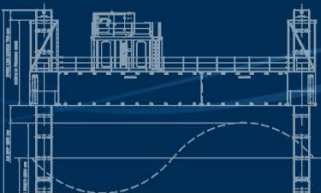


ABH

Australian Barge Hire



SEA LIFT 6

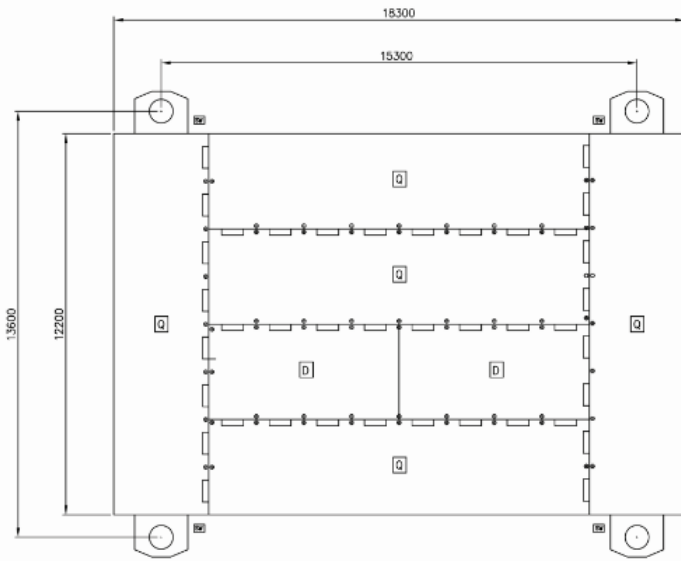


JACK-UP



BARGE SELF ELEVATING PLATFORM

SEA LIFT 6



General

Type	Jack Up Barge
Operator	Australian Barge Hire Pty Ltd
Survey	Australian Maritime Safety Authority
Classification	AMSA 2E and 2C
Construction	Steel
Road Transport	9 standard Semi Trailers
Working Depth	Up to 25 metres

Main Dimensions

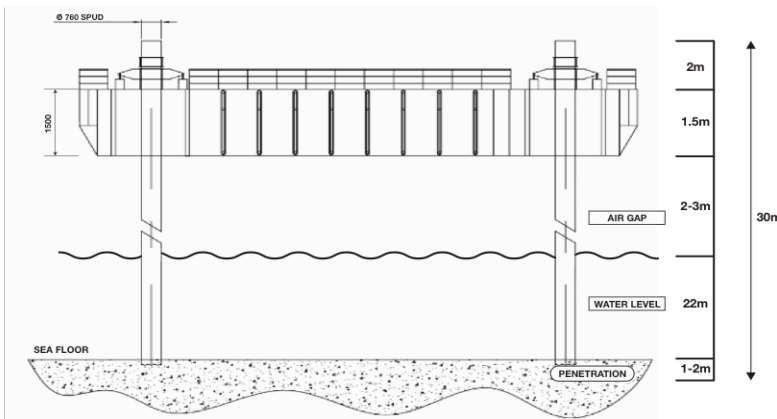
Length Overall	19.81	metres
Beam	14.50	metres
Depth	1.50	metres
Draft	0.91	metres
Displacement	202.68	tonnes (unladen)

Jacking System

Jacking system	Manual hydraulic
Jacking Rate	12 metres per hour
Load Lift Capacity	80 tonnes
Spud Length	17.3 - 30 metres
Power Unit	HPU 1 x 55 kW

Features

- 600mm Diameter Moon Pool
- Onboard Site Office
- Remote controlled gangway access
- Max 3 tonne Deck Crane
- Road Transportable



Note: That the below figures are a guide only and a full analysis would need to be undertaken for project specific parameters.

Water Depth	Max Wave
10m	3.0m
15m	2.5m
20m	2.0m

Australian Barge Hire

PO Box 749 CARINGBAH NSW 1495
 Phone: 02 9531 2900 Email: info@australianbargehire.com

