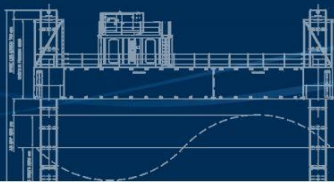


ABH

Australian Barge Hire



SEA LIFT 3

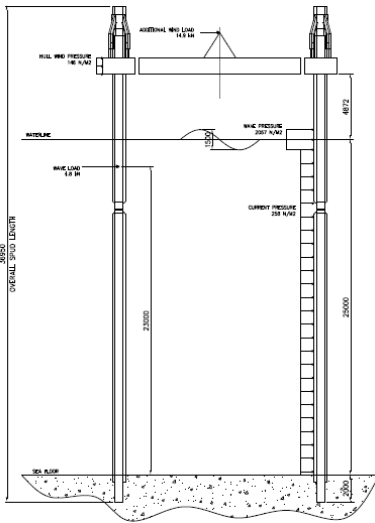
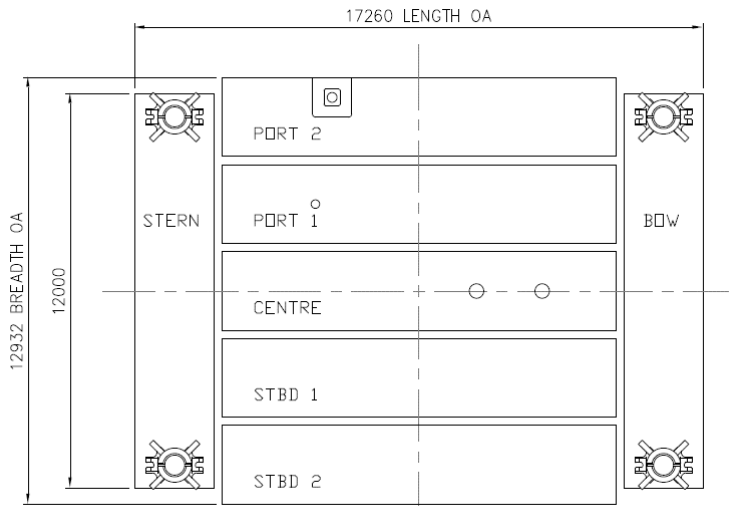


JACK-UP

BARGE SELF ELEVATING PLATFORM



SEA LIFT 3



General

Type	Jack Up Barge
Operator	Australian Barge Hire Pty Ltd
Survey	Australian Maritime Safety Authority
Classification	AMSA 2D
Construction	Steel
Road Transport	7 standard Semi Trailers, 2 extendable trailers (18m)
Working Depth	Up to 25+ metres

Main Dimensions

Length Overall	17.20	metres
Beam	12.90	metres
Depth	1.20	metres
Draft	0.80	metres
Displacement	80	tonnes (unladen)

Jacking System

Jacking system	Electronic over hydraulic
Jacking Rate	10 metres per hour
Load Lift Capacity	30 tonnes
Spud Length	15 ,21, 36 metres
Power Unit	HPU 4 x 30 kW

Features

- 475mm Diameter Moon Pool
- 420mm Diameter Rod Rack
- Onboard Site Office
- Remote controlled jacking operation
- Remote controlled gangway access
- Max 3 tonne Deck Crane
- Road Transportable

Note: The below figures are a guide only and a full analysis would need to be undertaken for project specific parameters.

Water Depth	Wave Height
20m	1.5m
25m	1.5m

Australian Barge Hire

PO Box 749 CARINGBAH NSW 1495

Phone: 02 9531 2900 Email: info@australianbargehire.com

