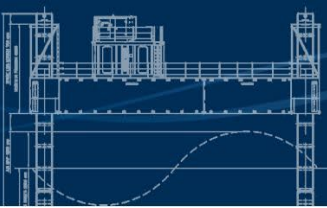
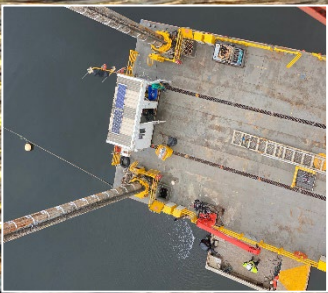


ABH

Australian Barge Hire



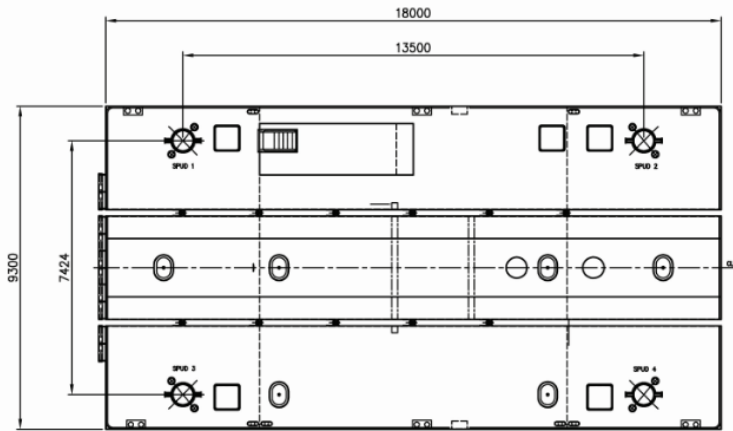
SEA LIFT 1



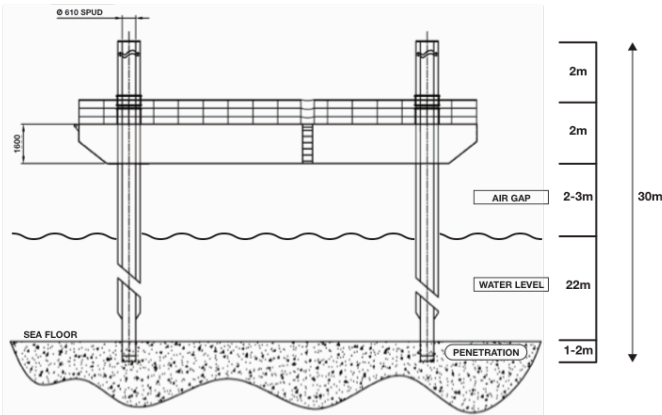
JACK-UP

BARGE SELF ELEVATING PLATFORM

SEA LIFT 1



SEA LIFT 1



General

Type	Jack Up Barge
Operator	Australian Barge Hire Pty Ltd
Survey	Australian Maritime Safety Authority
Classification	AMSA 2D and 2C
Construction	Steel
Road Transport	7 Extendable Semi Trailers
Working Depth	Up to 22 metres

Main Dimensions

Length Overall	18.00	metres
Beam	9.30	metres
Depth	1.60	metres
Draft	0.80	metres
Displacement	100	tonnes (unladen)

Jacking System

Jacking system	Electronic over hydraulic
Jacking Rate	13 metres per hour
Load Lift Capacity	80 tonnes
Spud Length	12, 18, 30 metres
Power Unit	100 kW

Features

- 600mm Diameter Moon Pool
- 600 mm Diameter Rod Rack
- Onboard Site Office
- Remote control gangway access
- Remote controlled jacking operation
- Max 3 tonne Deck Crane
- Stable working platform
- Road transportable

Note: The below figures are a guide only and a full analysis would need to be undertaken for project specific parameters.

Water Depth	Wave Height
10m	4.5m
15m	4.0m
20m	2.5m

Australian Barge Hire

PO Box 749 CARINGBAH NSW 1495

Phone: 02 9531 2900 Email: info@australianbargehire.com